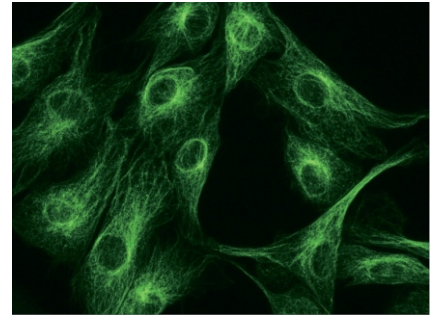


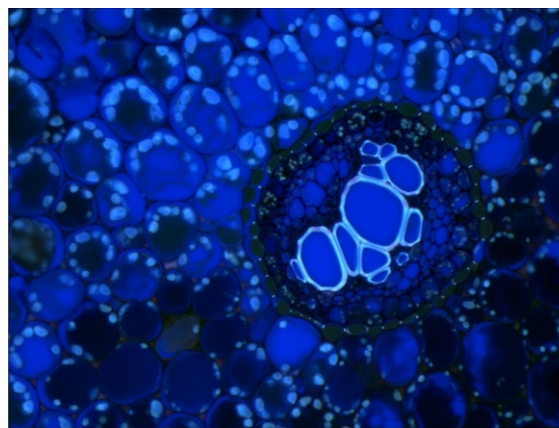
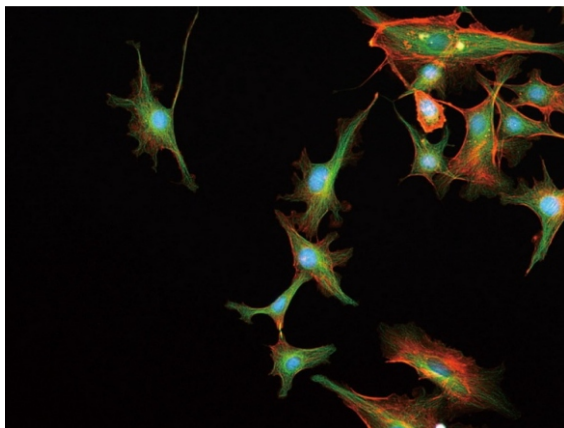
# BRTIP MDI-300 倒立生物顯微鏡

## Inverted Biological Microscope MDI-300

- 無限遠色差補正光學系統，提供優越之光學品質  
With infinite optical system, providing excellent optical quality and making image perfect.
- 粗微調焦低位系統，單手調焦及光源亮度即可完成，效率提高；結合高穩定性鏡體機構  
with low and forward position coaxial focus system. focusing knobs and brightness adjustable knob within reaching location, stable integral structure, reasonable ergonomic design, making operator feel more comfortable and effective.



## BRTIP MDI-300 倒立生物顯微鏡 Inverted Biological Microscope MDI-300



### 配置表

接目鏡筒 Eyepiece Tube	折疊式雙眼式 45°傾斜, 瞳距調節範圍: 48 ~ 75mm Seidentopf Binocular Viewing Head Inclined at 30°, Interpupillary 48~75mm		
目 鏡 Eyepiece	高眼點, 超大視野目鏡EW10X/20 High-point, Extra Wide Field Eyepiece EW10X/20		
物 鏡 Objective	無限遠平場消色差長工作距離物鏡 LWD Infinitive Plan Achromatic Objective	4X/0.10	WD 22 mm
	無限遠平場消色位相差物鏡 Infinitive Plan Achromatic Phase Objective	PH10X/0.25	WD 6 mm
		PH20X/0.4	WD 3.1 mm
		PH40X/0.55	WD 2.2 mm
	掩膜位相差物鏡 Higu-Level Phase Contrast Objective	PH10X/0.25	WD 6 mm
	PH20X/0.4	WD 3.1 mm	選配
	PH40X/0.55	WD 2.2 mm	選配
	燈室校正物鏡 Lamp House Adjustment Objective		選配
鼻 輪 Nosepiece	五孔式 Quintuple Nosepiece		
聚 光 鏡 Condenser	超長工作距離聚光鏡NA0.3,LWD72mm;卸下聚光鏡可選150mm培養皿 ELWD Condenser NA0.3,LWD72mm;(without Condenser 150mm)		
對中望遠鏡 Centering Telescope	鏡筒直徑30mm Centering Telescope		
位相差滑板 Phase Annulus	10X-20X,40X可調心型位相差滑板 10X-20X,40XPhase Annulus Plate(Center Adjustable)		
載物台 Stage	平面載物台 Plain Stage 170X230		
	載物台插入圓盤 Glass Insert		
	機械移動尺,右手低位同軸X,Y方向旋鈕,移動範圍:120X80mm		
	接長托板 Auxiliary Stages Terasak托架Terasak Holder 直徑38mm培養皿托架38mm Petri Dish Holder 直徑54mm培養皿托架54mm Petri Dish Holder		
調焦裝置 Focusing	同軸粗微調焦機械結構,微調格值0.002mm,調焦範圍向上4.5mm/向下4.5mm Coaxial Coarse and Fine Adjustment, Fine Division 0.002mm, Moving Range up 4.5mm / down 4.5mm		
照明系統 Illumination	6V/30W 鹵素燈 Halogen Lamp 6V/30W 直徑45mm藍色.綠色.磨砂玻璃片 Diameter 45mm,Green and Ground Glass		
附件 Accessories	攝影附件Photo Attachment		
	C型攝影接口 C Mount 0.4X		
	落射螢光裝置 Epi-Fluorescent Attachment		

## 明頂科技有限公司

高雄市鼓山區中華一路79號

TEL. 886-7-552-6160

FAX.886-7-586-6000

<http://www.mding.com.tw>